

Update from Patient Care Process Workgroup on MTM definition

June 27, 2017



Objective

- Update JCPP organizational CEO's and Presidential Officers on the progress of the JCPP Pharmacists' Patient Care Process Workgroup in revising the profession's consensus MTM definition
- Share the draft definition that is targeted for a 30-day public comment period



Why are we doing this?

Accepted terminology and definitions facilitate:

- **Recognition/branding:** Help to promote understanding and expectations for pharmacists' patient care services
- **Evidence base:** Facilitate measurement of impact and value
- **Documentation/communication:** Health IT is driving use of terms mapped to SNOMED CT codes for documentation and information exchange
 - SNOMED CT are mapped to **terms** based on the **definitions** for those terms

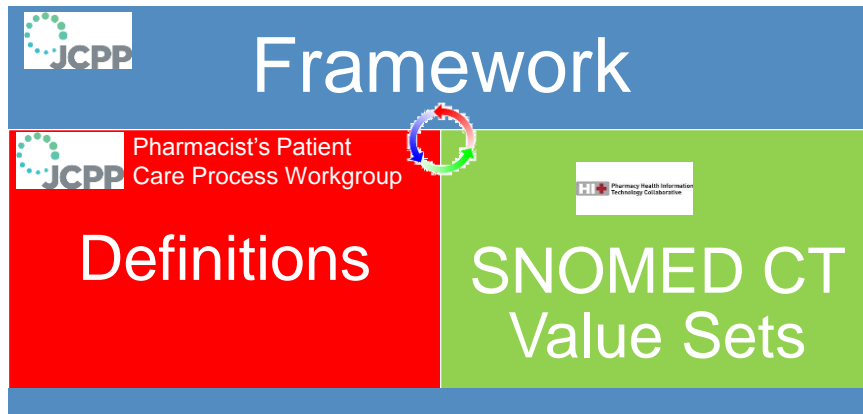


Background

- 2016 AMCP/PQA/PHIT framework to inform the Enhanced Part D MTM Program (terms and definitions mapped with SNOMED CT codes)
 - Request to JCPP to assume stewardship
 - Desire to ensure definitions and framework align with JCPP Pharmacist's Patient Care Process (PPCP)
- Lack of consensus on MTM Definition (need for more work)
 - Short-term agreement to have PPCP Workgroup address



JCPP Proposed Stewardship Approach



Patient Care Process Workgroup

- AACP
- ACCP
- ACPE
- AMCP
- APhA
- ASCP
- ASHP
- CPNP
- HOPA
- NACDS
- NASPA
- NCPA
- PHIT
- PQA



MTM* Definition Development Process

- Consensus approach
- Environmental scan for existing definitions
- Workgroup meetings Feb 3 – June 21, 2017
 - 6 meetings – 1.5 hours
 - In person/conference call format - 90-100% participation
- Modified-Delphi method - surveys disseminated after each meeting
 - Validate consensus decisions
 - Gather input on key issues
 - Survey results shared at the next scheduled meeting

*MTM is the placeholder for the term to be used for the definition



What is consensus?

Agreement by all members of the workgroup rather than the majority or a select group of representatives:

- All organizations agree with the proposed definition and are willing to carry it out;
- No one will block or obstruct the decision or its implementation; and
- Everyone will support the decision and implement it

https://www.heart.org/idc/groups/heart-public/@wcm/@mwa/documents/downloadable/ucm_454080.pdf



MTM* Definition Development

- Creation of the *draft* definition and supporting materials
 - Identify the parameters for the definition
 - Identify the key elements in the definition
 - Identify the term for the definition – in progress
 - Develop rationale for the definition
 - Develop supporting text that highlights pharmacists' contributions to MTM* services
- Public comment period – 30 days – coming soon
- JCPP Board of Governors vote to approve



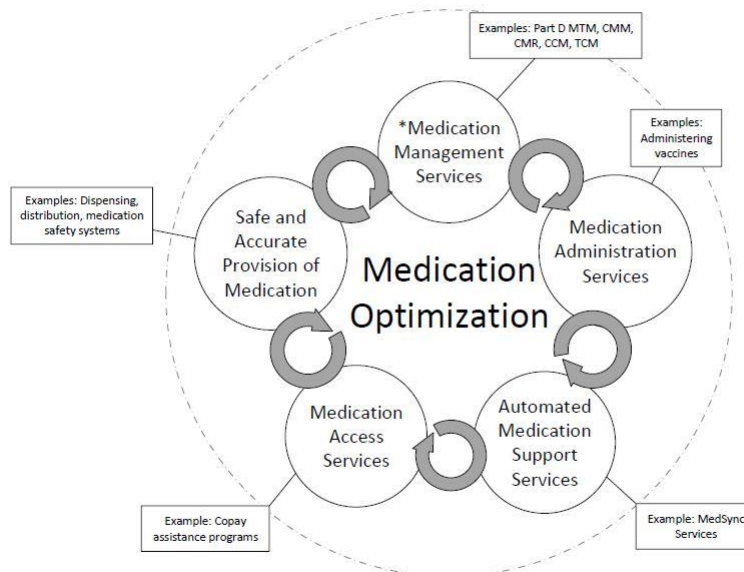
Draft Definition for Public Comment

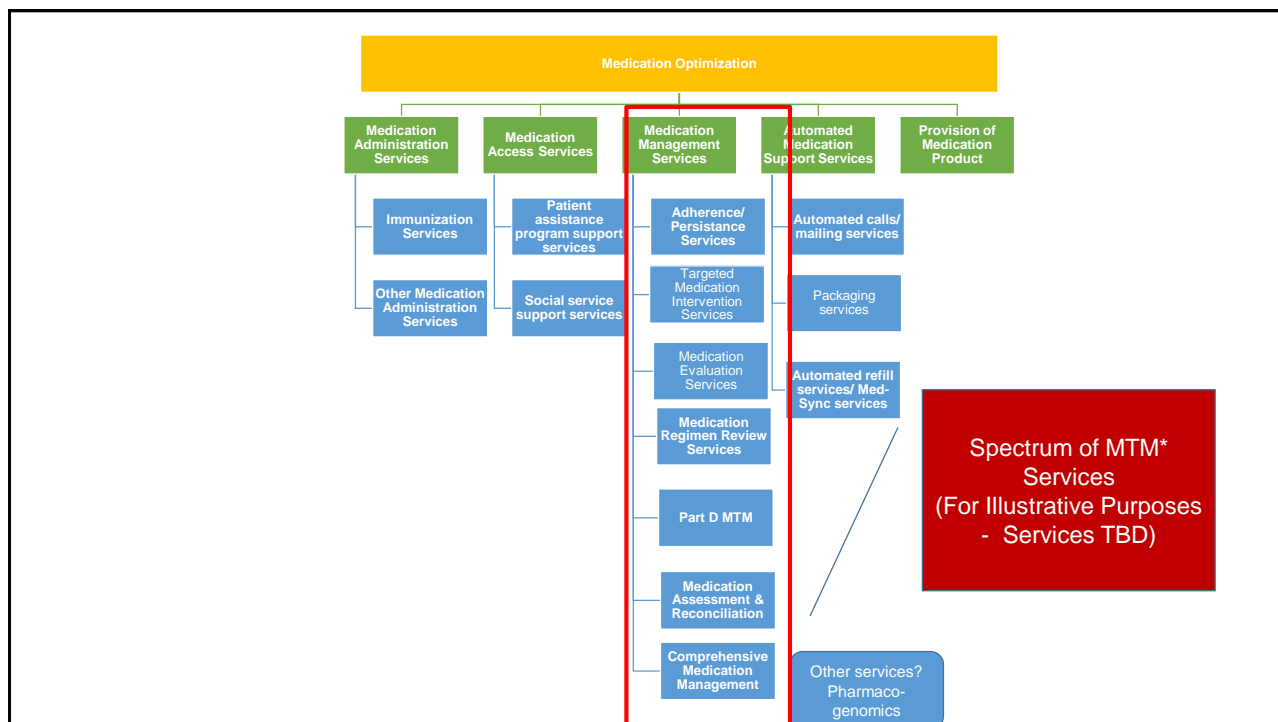
- MTM* is a spectrum of patient-centered, collaborative, professional services that focus on the appropriateness, effectiveness, and safety of medication use with the goal of improving health outcomes.



Rationale for the definition

- Broad in scope, concise in format, and easy-to understand
- Reflect medication contributions of the health care team, including pharmacists
- Key elements:
 - Patient-centered approach to care
 - Spectrum of services
 - Focus on appropriateness, safety and effectiveness of medication use
 - Collaborative approach to care
- Pharmacists' contribute unique medication expertise – reflect in supporting text
- Activities in 2004 definition are now reflected in Pharmacists' Patient Care Process
- MTM* services fall under a general goal of medication optimization





Draft Supporting Text Promoting Pharmacists

Pharmacists deliver medication therapy management services by:

- Consistently using the Pharmacists' Patient Care Process (include link to the process)
- Using a person-centered approach to care that includes developing and maintaining a patient-pharmacist relationship that supports engagement and effective communication with patients.

Draft Supporting Text Promoting Pharmacists

Pharmacists deliver medication therapy management services by:

- Coordinating care with the patient and other members of the health care team
- Documenting the care provided using a standardized format (e.g. SNOMED CT) to demonstrate quality and value
- Adherence contributions?
- Professional services?



The Term – Determined in Public Comment Period?

- Medication Therapy Management
- Medication Management
- Comprehensive Medication Management
- Collaborative Medication Management
- Other



Next Steps

- 30-day public comment period
 - All organizations participate
 - Common link to survey tool
 - Primary focus on the pharmacy community
- Patient Care Process Workgroup to review and assimilate comments
- JCPP Board of Governors consideration for approval
- Review other terms/definitions in AMCP/PHIT/PQA framework for JCPP endorsement

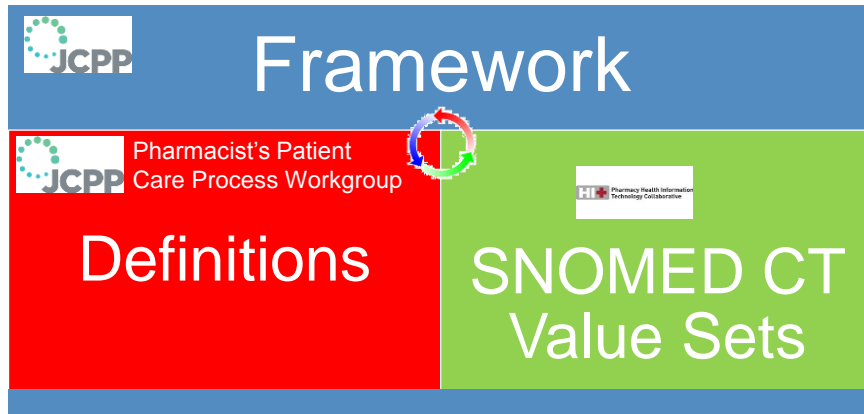


JCPP SNOMED Stewardship Committee

- Monitoring progress of Patient Care Process Workgroup
- Discussions of long-term structure and resource needs to:
 - Develop new definitions and maintain existing definitions
 - Review and endorse value sets created by the Pharmacy HIT Collaborative (value sets map SNOMED CT codes to terms)



JCPP Proposed Stewardship Approach



Coding Contributions to Standardization

- SNOMED CT Codes
 - Systemized Nomenclature of Medicine – Clinical Terms
 - Used for electronic exchange of clinical health information

SNOMED CT Code:
428981000124101

SNOMED CT Concept

1. NEW OR ADDITIONAL THERAPY NEEDED

Additional medication required for additive effect (finding)
 Additional medication required for synergistic effect (finding)
 Additional medication therapy required (finding)
 New medication therapy needed for condition (situation)
 Preventive medication therapy needed (situation)

****Facilitates consistent documentation and reporting**

<https://www.nlm.nih.gov/healthit/snomedct/index.html>

Discussion

